

EDITOR

Jagdev M. Sharma
The Biodesign Institute
Arizona State University
Tempe, Arizona 85287-5401

BUSINESS MANAGER

Charles L. Hofacre
University of Georgia
953 College Station Road
Athens, Georgia 30602-4875

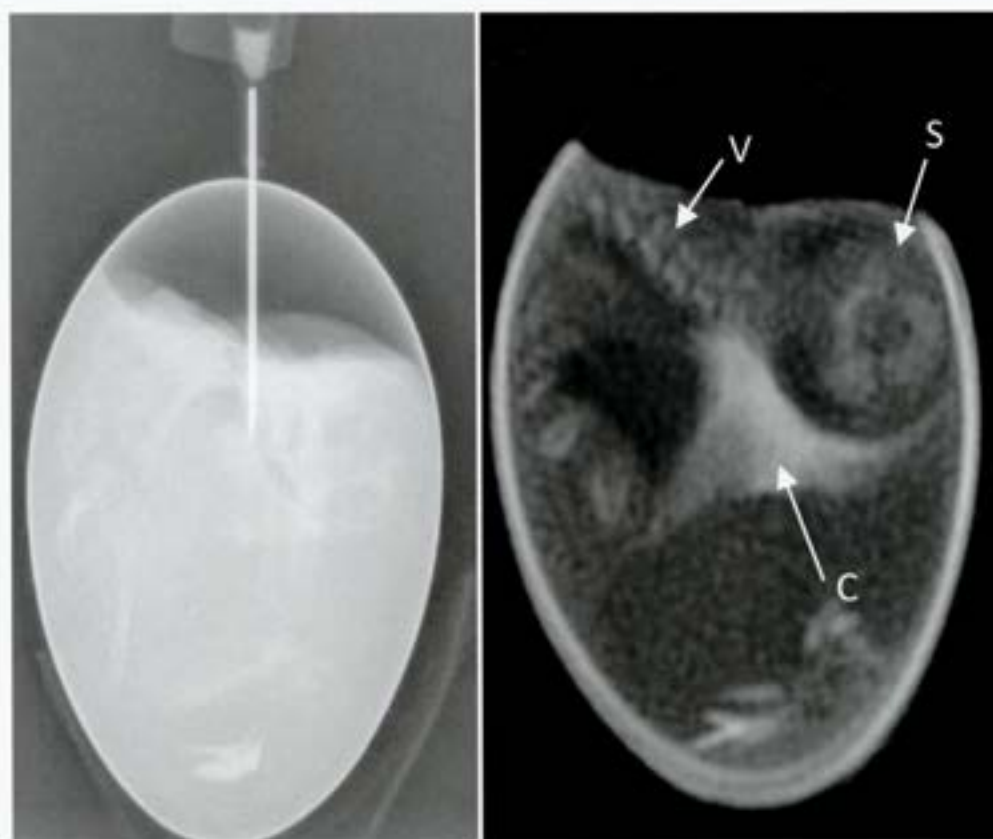
EDITORIAL BOARD

A. Banda
A. J. Bermudez
G. Browning
H. D. Chapman
R. P. Chin
S. Davison
J. M. Day
C. Ewers
A. M. Fady
S. D. Fitzgerald
O. J. Fletcher
M. Garcia
R. K. Gast
P. Gibbs
I. Gimeno
J. S. Guy
F. J. Hoer
D. J. Jackwood
M. W. Jackwood
T. Johnson
D. R. Kapczynski
S. H. Kleven
C. W. Lee
M. Lee
H. S. Lillehoj
B. Lupiani
L. R. McDougald
L. Nolan
M. Pantin-Jackwood
M. S. Parcels
S. Rautenschlein
S. Reddy
D. L. Reynolds
K. Roland
Y. M. Saif
K. A. Schat
H. L. Shivaprasad
R. F. Silva
E. Spackman
D. L. Suarez
D. E. Swayne
H. Toro
J.-P. Vallancourt
V. van Santen
P. S. Wakenell
P. Wigley
P. R. Woolcock
C. C. Wu
Q. Zhang
L. Zsak

Avian Diseases

An international journal dedicated to avian health

Published Quarterly by
the American Association of Avian Pathologists



Vol. 55 No. 4

December 2011

Pages 525-744

Avian Diseases

Vol. 55, No. 4

December 2011

Table of Contents

Awards—

2011 AAAP Awards	525
----------------------------	-----

Regular Articles—

<i>papA</i> Gene of Avian Pathogenic <i>Escherichia coli</i> . SUBHASHINIE KARIYAWASAM AND LISA K. NOLAN	532
Impact of Fresh or Used Litter on the Posthatch Immune System of Commercial Broilers. K. W. LEE, H. S. LILLEHOJ, S. H. LEE, S. I. JANG, G. DONALD RITTER, D. A. BAUTISTA, AND E. P. LILLEHOJ	539
A Multiplex PCR for Detection of Poxvirus and Papillomavirus in Cutaneous Warts from Live Birds and Museum Skins. J ⁿ . PÉREZ-TRIS, R. A. J. WILLIAMS, E. ABEL-FERNÁNDEZ, J. BARREIRO, J. J. CONESA, J. FIGUEROLA, M. MARTINEZ-MARTÍNEZ, A. RAMÍREZ, AND L. BENÍTEZ	545
Identification and Virulence Characterization of Fowl Adenoviruses in Korea. TAE-HYUN LIM, HYUN-JEONG LEE, DONG-HUN LEE, YU-NA LEE, JAE-KEUN PARK, HA-NA YOUN, MYUNG-SEOB KIM, HO-SIK YOUN, JOONG-BOK LEE, SEUNG-YONG PARK, IN-SOO CHOI, AND CHANG-SEON SONG	554
Glycosylation of the Envelope Protein of West Nile Virus Affects Its Replication in Chicks. MASASHI TOTANI, KENTARO YOSHII, HIROAKI KARIWA, AND IKUO TAKASHIMA	561
Characterization of a ts-11–like <i>Mycoplasma gallisepticum</i> Isolate from Commercial Broiler Chickens. M. EL GAZZAR, V. A. LAIBINIS, AND N. FERGUSON-NOEL	569
Rapid Detection of Group I Avian Adenoviruses by a Loop-Mediated Isothermal Amplification. ZHIXUN XIE, YI TANG, QING FAN, JIABO LIU, YAOSHAN PANG, XIANWEN DENG, ZHIQIN XIE, YI PENG, LIJI XIE, AND MAZHAR I. KHAN	575
Horizontal Transmission of <i>Salmonella</i> and <i>Campylobacter</i> Among Caged and Cage-Free Laying Hens. J. F. HANNAH, J. L. WILSON, N. A. COX, L. J. RICHARDSON, J. A. CASON, D. V. BOURASSA, AND R. J. BUHR	580
Colonization of a Marker and Field Strain of <i>Salmonella</i> Enteritidis and a Marker Strain of <i>Salmonella</i> Typhimurium in Vancomycin-Pretreated and Nonpretreated Laying Hens. J. F. HANNAH, J. L. WILSON, N. A. COX, L. J. RICHARDSON, J. A. CASON, D. V. BOURASSA, AND R. J. BUHR	588
Influenza A Virus Surveillance in Live-Bird Markets: First Report of Influenza A Virus Subtype H4N6, H4N9, and H10N3 in Thailand. TRONG WISEDCHANWET, MANOOSAK WONGPACHARACHAI, SUPANAT BOONYAPISITSOPA, NAPAWAN BUNPAPONG, WALEEMAS JAIRAK, PRAVINA KITIKOON, JIROJ SASIPREEYAJUN, AND ALONGKORN AMONSIN	593
Moving-Average Trigger for Early Detection of Rapidly Increasing Mortality in Caged Table-Egg Layers. SASIDHAR MALLADI, J. TODD WEAVER, TIMOTHY L. CLOUSE, KATHE E. BJORK, AND DARRELL W. TRAMPEL	603

About the cover

The radiograph on the cover is from an article by Breedlove and coworkers from Auburn University, Birmingham, Alabama. The article begins on page 667. The authors used an imaging technique to examine the chicken egg to identify the location of the inoculum delivered by the in ovo route. The radiograph shows the presence of the inoculum in the amniotic and the allantoic cavities. The authors speculate that amnion localization of the vaccine exposes the embryo to the vaccine virus via skin and swallowing whereas allantoic localization may allow the vaccine to reach the bursa through the cloaca. In the right-hand figure, V indicates the embryo vertebra; S indicates the embryo skull; and C indicates the contrast solution.