

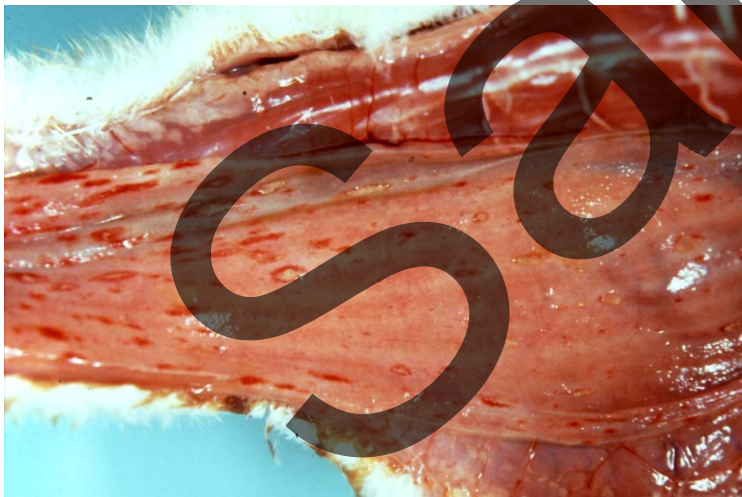
# Duck Virus Enteritis (Duck Plague)

- **Prevention and Control**
  - Prevent cohabitation of commercial ducks with wild waterfowl.
  - Suspect cases should be reported to State or Federal diagnostic labs.
  - After DEV has been identified, recommended steps include:
    - Depopulation, removal of birds from infected environment, disinfection and vaccination of susceptible ducks.
  - A live attenuated vaccine is available for ducks at least 2 weeks of age. Annual revaccination is recommended for flocks maintained for more than 1 year.
  - There is no effective treatment.

# Duck Virus Enteritis (Duck Plague)



Depression and droopiness in DVE infected duck



DVE: Esophageal ulceration and hemorrhage